

DM2000

PRECISION DEW POINT METER

- Precision drift free dew point measurement, accuracy could reach $\pm 0.2^{\circ}\text{Cdp}$
- Robust and durable sensor design, superior stability
- Force frost and auto cleaning technology
- 7 inch TFT touch screen for better user experience
- Built-in battery could support continuous work for 8 hours
- Support RS232/485, USB, LAN communication



DM2000



DM2000

DM2000

PRECISION DEW POINT METER

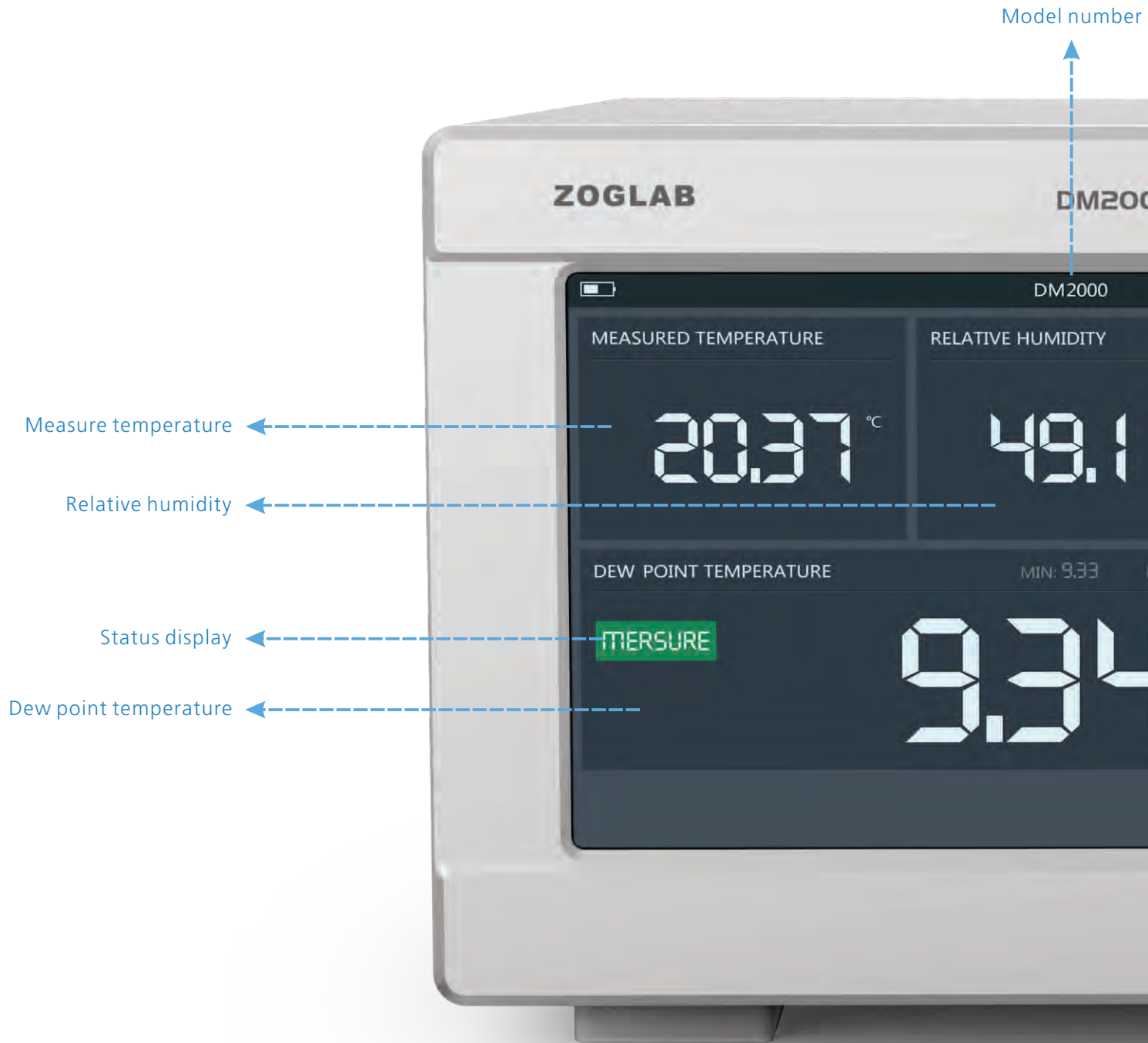
DM2000 Precision Mirror Dew Point Meter is a precision hygrometer, dew point measuring range $-30^{\circ}\text{C dp} \sim 90^{\circ}\text{C dp}$, humidity measuring range $2\% \text{RH} \sim 100\% \text{RH}$. Drift free and precise dew point measurement; temperature measuring accuracy is $\pm 0.1^{\circ}\text{C}$; dew point measurement accuracy could reach $\pm 0.2^{\circ}\text{C dp}$; Robust and durable sensor design, force frost technology .

DM2000 adopts humanized design, and could connect with drift free dew point sensor and complete laboratory and industrial humidity measurement. 7 inch TFT touch screen for better user experience. It could support communication via serial, LAN(Ethernet) and USB, etc.; Built-in battery could support continuous work for 8 hours, better for outdoor application, easy to use.

- Precision drift free dew point measurement
- Accuracy could reach $\pm 0.2^{\circ}\text{C dp}$
- Robust and durable sensor design
- Force frost and auto cleaning technology
- 7 inch TFT touch screen for better user experience
- Built-in battery could support continuous work for 8 hours
- Support RS232/485, USB, LAN communication



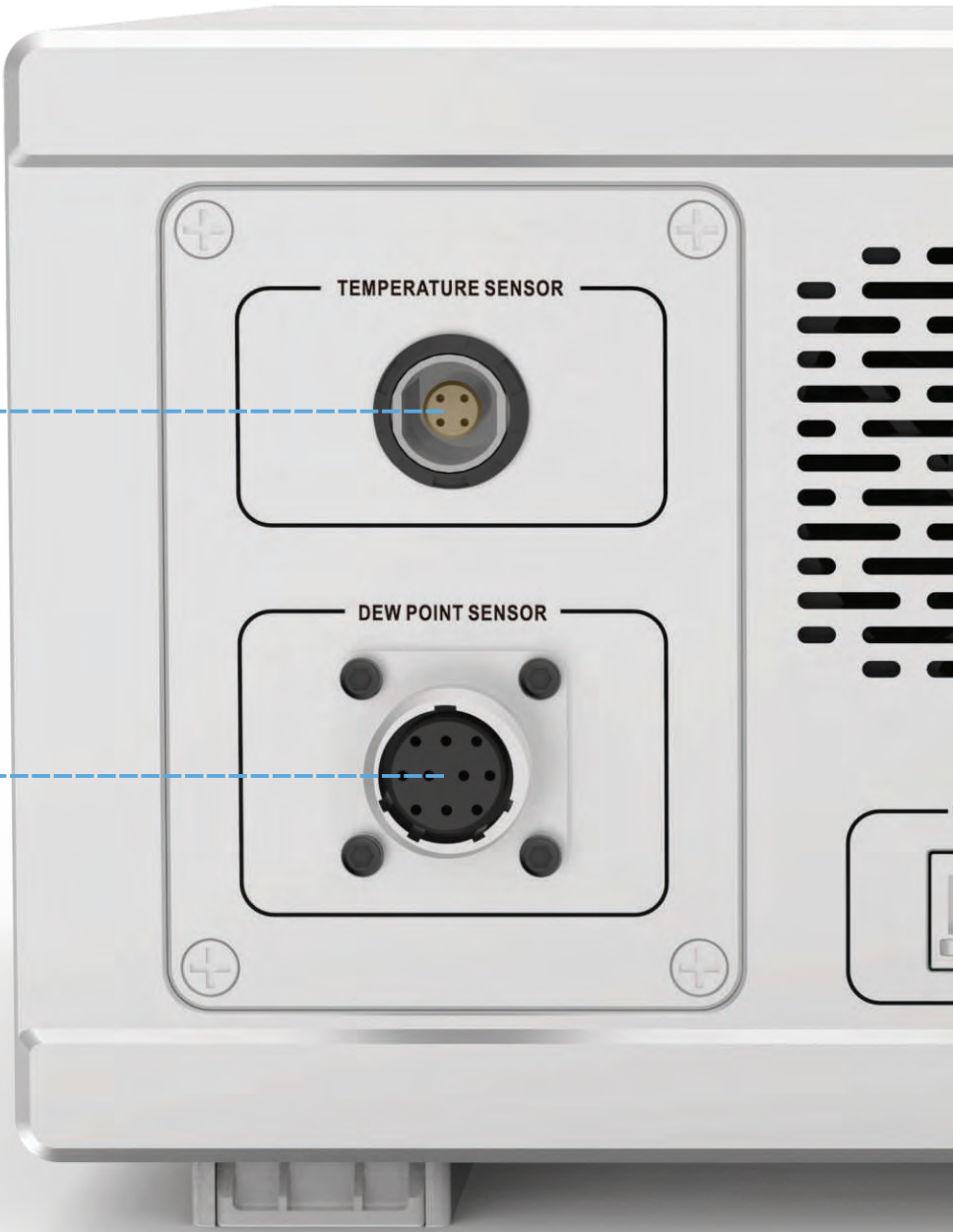
DM2000 • Host Machine

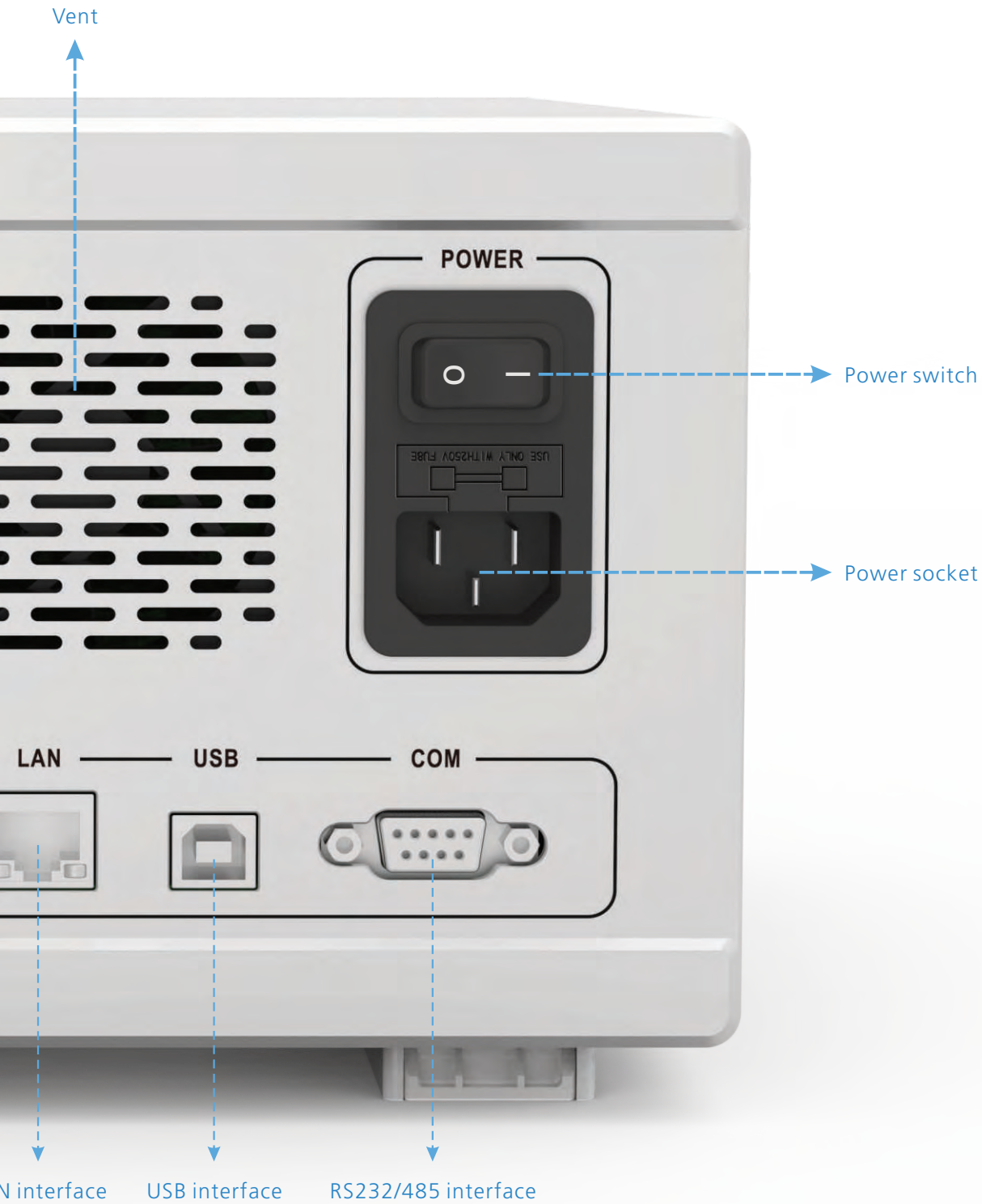




Temperature sensor interface

Dew point sensor interface



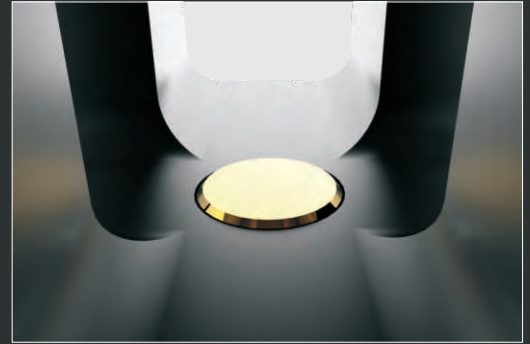


DM2000 • Functions and Features



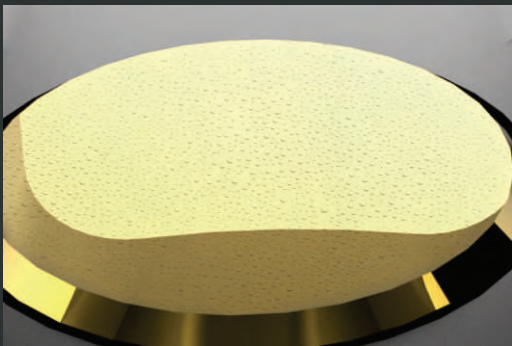
Measurement

- Drift free dew point measurement, measuring range -30~90°Cdp
- Measuring accuracy $\pm 0.2^{\circ}\text{Cdp}$, $\pm 0.1^{\circ}\text{C}$
- Response $1^{\circ}\text{C}/\text{sec}$, plus set time (As per dew point)



Stability

- Gold-plated copper material, stable performance, robust and durable
- Excellent thermal conductivity, high temperature resistant



Auto Cleaning Technology

- Auto pollution dynamic correction
- Auto setting for the measuring reference point



Color Touchscreen

- 7 inch super big TFT LCD display
- Capacitive touchscreen operation
- Could check graph



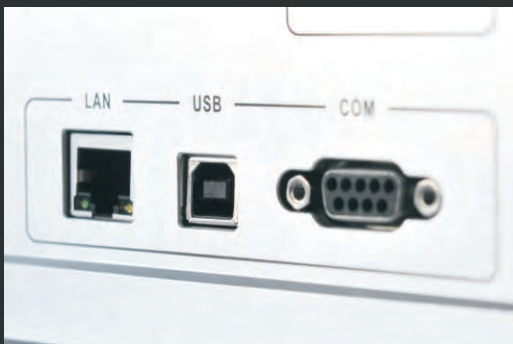
Force Frost

- Stable temperature control mirror
- Advanced optical detection system



Logging

- Internal storage capacity of 1G, and could extend to external storage
- Support USB flash disk to export data



Communication

- Support RS232/485, USB, LAN communication interfaces
- Support remote control and group networking application
- Support embedded Web operation



Power Supply

- 100~240 VAC universal input
- Built-in lithium polymer battery support continuous work for 8 hours

DM2000 • Technical Specification

Technical Specification

Measuring accuracy	$\pm 0.2^{\circ}\text{Cdp}$, $\pm 0.1^{\circ}\text{C}$ Temperature	Resolution	0.1 for $^{\circ}\text{C}$, $^{\circ}\text{F}$ and %RH, 0.01 for g/m^3 and g/kg
Measurement units	$^{\circ}\text{C}$, $^{\circ}\text{F}$ dew point; %RH; $^{\circ}\text{C}$, $^{\circ}\text{F}$ temperature; g/m^3 ; g/kg ; aw; Δ (t-t dew point)		Response speed

Dew Point Sensor

Dew point range	-30°Cdp @ sensor temperature of 20°C $+90^{\circ}\text{Cdp}$ @ sensor temperature of 90°C	Sensor material	316L stainless steel(Standard)
		Temperature measuring	4 wires PT100, 1/3 DIN class B
Temperature range	-40°C ~ 90°C (dew point sensor working temperature)	Max speed	10 m/s direct insertion, 30 m/s with sintered guard
Humidity range	<2%RH~100%RH	Sampling flow	0~2 NI/min(Under sampling)
Min measured dew point	-30°C @ 20°C	Pressure	2MPa
Mirror material	Gold-plated copper(Standard)	Cable length	2m/5m/customized

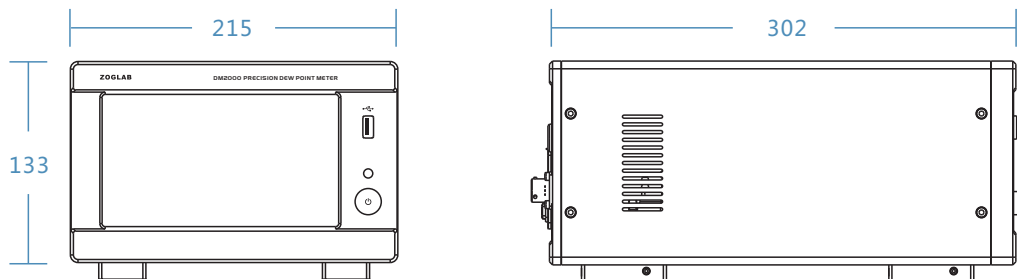
Temperature Sensor

Temperature measuring	4 wires PT100, 1/10 DIN class B	Cable length	2m/5m/customized
-----------------------	---------------------------------	--------------	------------------

General Specification

Display	7 inch, 800x480 TFT LCD
Working temperature	-20 ~ 50°C (Whole machine)
Working environment	-10 ~ 40°C , 10%~95%RH(Non-condensing)
Storage environment	-20 ~ 70°C , 10%~95%RH(Non-condensing)
Power supply	100~240VAC 0.5A, 50/60Hz
Battery	Lithium polymer battery 14.8V/8000mAh
Battery life	Continuous works for 8 hours/ stand by 90 days
Communication interface	RS485/232, USB, LAN
EMC	EN 50081-1 Class B EN 50082-1 Class B
ESD Protection	$\pm 25\text{KV}$
Dimensions	215x133x302mm(w/h/d) (3U, 1/2 size of 19 inch rack)
Weight	5kg
Certifications	CE, FCC, VCCI, C-TICK

Dimensions(mm)



DM2000 • Accessories

Standard Accessories

Dew point sensor



Temperature sensor



Serial communication cable



LAN communication cable



USB communication cable



Power cable



Calibration Certificate



User's manual



Warranty card



Qualification



Maintenance manual



WEEE card



CD



Optional Accessories

Pump



Ordering Information

Ordering model	Features
DM2000 PRO	-40°Cdp~90°Cdp
DM2000 STD	-30°Cdp~90°Cdp

International Free Call

+86-400-8878-571



Website



Weibo



WeChat



Youku



Facebook



Twitter



LinkedIn



Google+

ZOGLAB Microsystem Co.,Ltd

Tel: +86-571-87176990(16 lines) Fax: +86-571-87176992 E-mail: sales@zoglab.cn
Add: Floor 1-3, South Block, Building A, KUNLUN Science Park, No.61 BaijiaYuan Road,
West Lake District, Hangzhou, CHINA P.C:310023

ZOGLAB Microsystem Co.,Ltd ©2002-2017 ZOGLAB. All Rights Reserved. www.zoglab.cn



RECYCLABLE
Printed in China