

ZOGLAB

MTC25

Mobile Temperature Calibrator

- Temperature calibrator with liquid bath and dry block combined
- Temperature control range: $-22^{\circ}\text{C} \sim 155^{\circ}\text{C}$
- Dry homogeneity $\pm 0.05^{\circ}\text{C}$
- Liquid homogeneity $\pm 0.01^{\circ}\text{C}$
- Stability $\pm 0.005^{\circ}\text{C}$
- Could connect external standard platinum resistor sensor and intelligent sensor



MTC25



MTC25

MTC25

MOBILE TEMPERATURE CALIBRATOR

MTC25 is a precision mobile temperature calibrator with liquid bath and dry block combined; Temperature Measuring range $-22^{\circ}\text{C}\sim 155^{\circ}\text{C}$. Featured technology with divided temperature control zone enable its excellent homogeneity and stability: homogeneity $\pm 0.05^{\circ}\text{C}$ (dry), $\pm 0.01^{\circ}\text{C}$ (liquid), stability $\pm 0.005^{\circ}\text{C}$.

MTC25 adopts humanized design, 7 inch TFT touch screen , friendly user interface; Multiple communication interfaces; could connect with external reference sensor, 145mm immersion depth; Maximum and minimum temperature alarm to prevent damage to sensors caused by excessive temperature; Support programmable control to realize fully automatic calibration. MTC25 is an ideal solution for laboratory and mobile calibration.

- Temperature calibrator with liquid bath and dry block combined
- Temperature control range: $-22^{\circ}\text{C}\sim 155^{\circ}\text{C}$
- Homogeneity $\pm 0.05^{\circ}\text{C}$ (dry), $\pm 0.01^{\circ}\text{C}$ (liquid)
- Stability $\pm 0.005^{\circ}\text{C}$
- Could connect external standard platinum resistor sensor and intelligent sensor
- 7 inch TFT touch screen, easy to read
- Maximum and minimum temperature alarm to prevent damage to sensors caused by excessive temperature
- Support programmable control to realize fully automatic calibration
- Support communication interface RS232/RS485/USB/LAN/Wi-Fi, etc.



MTC25 • Host Machine



Power key
Power on/off

User interface
7 inch TFT touch screen,
optimized human-machine
interactive interface

Shortcut key area

- OK key
- Mode
- Setting key
- Direction key
- Run
- Cancel(ESC)

Reference sensor interface
DSP sensor interface

Platinum resistor measuring interface
Could measure 4 wire, 3 wire
and 2 wire platinum resistor

Current and voltage measuring interface
Could measure 4~20mA current
Could measure 0~10V voltage

Power switch
Switch test interface
Power interface

Ground
Thermocouple interface
Could connect thermocouple,
support model J, K, ect.



Max and min temperature alarm indicator light
Prevent the damage from excessive temperature

Multiple temperature control divisions
Improve the vertical thermal field homogeneity

Handle

Communication interface area

USB-A interface

RS232/RS485 interface

USB-B interface

LAN interface

Swift cooling and heating
Compact and efficient cooling
and heating technology

Air entrance

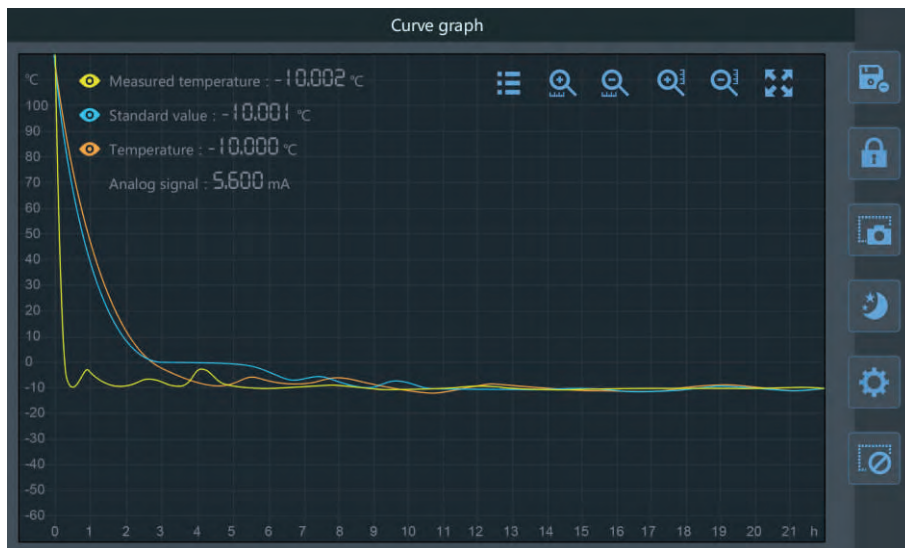
MTC25 • Human-machine Interactive Interface

Superior UI Design

MTC25 user interface is simple and easy to operate, and some basic functions could be done quickly by clicking the buttons, such as temperature setting, liquid mixing and programming, etc. User could check and compare the real-time measured value, set value, standard value and analog signal value, and could also check the value change via the curve graph. Shortcut keys are in the right of the interface, such as storage management, screen shot, screen lock, day and night switch mode, system setting, etc.



Curve interface



Programmable Temperature Calibration

MTC25 could preset temperature value, and automatically heat up and keep stable. User could set stable time, cycle time, etc. as requested.

Program manager

Program Name	Control Points	Total duration(Second)	Change the time
PROGRAM_1	7	420	2015/07/29 11:49:05
PROGRAM_2	6	75	2015/07/29 11:49:15
PROGRAM_3	7	420	2015/07/29 11:54:41
PROGRAM_4	8	320	2015/08/10 10:36:46
PROGRAM_5	10	200	2015/08/12 09:30:32
PROGRAM_6	6	60	2015/08/15 13:52:41
PROGRAM_7	12	120	2015/08/16 14:22:36
PROGRAM_8	9	240	2015/08/17 13:54:41

Buttons: New, Delete, Alter, Run, Quit

Modify the program

	Temperature (°C)	Time (min)
1	-20	30
2	-15	30
3	-10	30
4	-5	30
5	0	30
6	5	30
7	10	30
8	15	30
9	20	30
10	25	30

Buttons: 1-9, 0, ±, ESC, ←, ENTER, OK, Cancel

Single

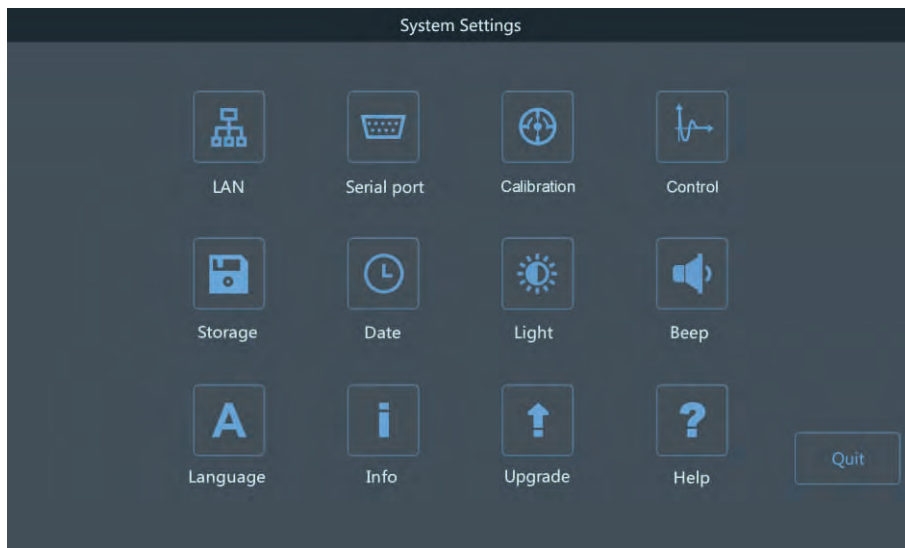


Cycling

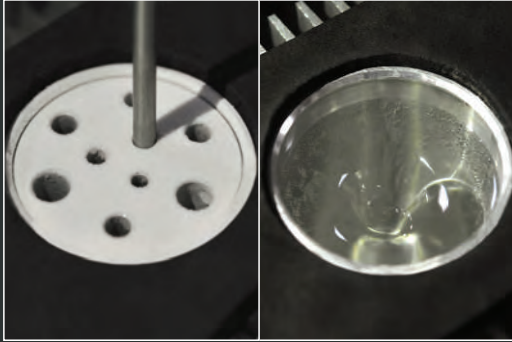


System Setting

Conduct various system parameters setting by clicking the system setting shortcut key in the main interface.



MTC25 • Functions and Features



Liquid Bath & Dry Block Combined

- T control range -22°C~155°C
- Support various models of isothermal block
- Support mediums of alcohol, water, silicon oil, etc.



Homogeneity & Stability

- Homogeneity $\pm 0.05^\circ\text{C}$ (dry), $\pm 0.01^\circ\text{C}$ (liquid)
- Multiple divisions heating and dynamic compensation ensure the superior temperature homogeneity
- Stability $\pm 0.005^\circ\text{C}$

Program manager				
Program Name	Control Points	Total duration(Second)	Change the time	
PROGRAM_1	7	420	2015/07/29 11:49:05	New
PROGRAM_2	6	75	2015/07/29 11:49:15	Delete
PROGRAM_3	7	420	2015/07/29 11:54:41	Alter
PROGRAM_4	8	320	2015/08/10 10:36:46	Run
PROGRAM_5	10	200	2015/08/12 09:30:32	
PROGRAM_6	6	60	2015/08/15 13:52:41	
PROGRAM_7	12	120	2015/08/16 14:22:36	
PROGRAM_8	9	240	2015/08/17 13:54:41	Quit

Programmable Control

- Could set step pitch and stable time, easy to read
- Realize fully automatic calibration by setting calibration points, stable time, deviation judgment, etc.



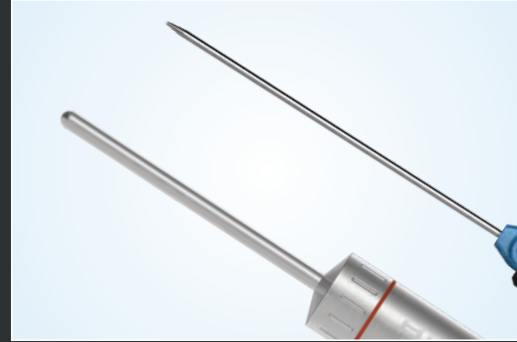
Touch Screen

- 7 inch super big TFT LCD display
- Capacitive touchscreen operation



Respond Time

- Heating Time -20°C~23°C 9 minutes
23°C~80°C 23 minutes
- Cooling Time 80°C~23°C 24 minutes
23°C~0°C 15 minutes
0°C~-15°C 21 minutes



Optional External Sensors

- Equipped with built-in temperature sensor, while external sensors are also supported, in order to ensure the high accuracy of field and laboratory calibration
- Reference sensor is equipped with intelligent connector, "plug and play"



Signal Measurement

- Support current, voltage and switch signal measurement
- Support 4 wire platinum resistor and thermocouple measurement



Communication

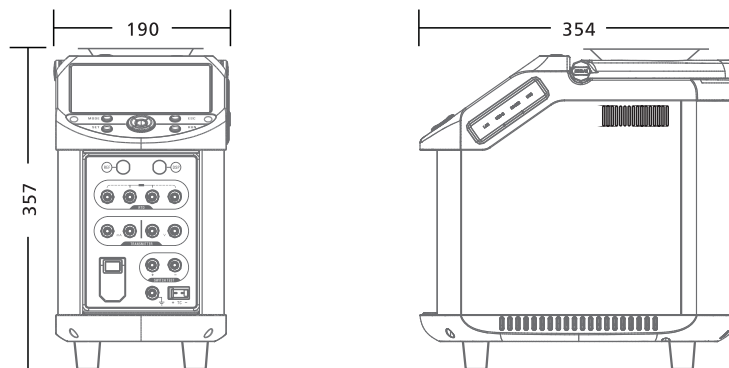
- Support communication interfaces of RS232/RS485, USB, LAN and Wi-Fi
- Support remote control and group networking
- Support embedded web operation

MTC25 • Technical Specification

Technical Specification	
T control range	-22°C~155°C
Accuracy(with external reference sensor)	±0.05°C
Accuracy(with internal reference sensor)	±0.18°C
Liquid homogeneity	±0.01°C
Dry homogeneity	±0.05°C
Stability	±0.005°C
Resolution	0.1°C or 0.01°C or 0.001°C
Working environment	0°C~35°C, 0%~90%RH(Non condensing), elevation<2000m
Immersion depth	145mm
Well diameter	Φ60mm
Heating time	-20°C~23°C 9min; 23°C~80°C 23min
Cooling time	80°C~23°C 24min; 23°C~0°C 15min; 0°C~-15°C 21min
Time to stability	<15min
Display	7 inch, 800×480 TFT LCD touch screen
Power supply	100~240VAC 0.5A , 50~60Hz
Communication interface	RS232/485, USB, Ethernet(LAN), Wi-Fi, Web Service
EMC	EN 50081-1 Class B EN 50082-1 Class B
ESD Protection	±25KV
Weight	11.5kg
Dimensions	190×357×354mm
Certificates	CE, FCC, VCCI, C-TICK

Reference Sensor		Analog Signal	
T Range	-100°C~200°C	Resistor measurement & accuracy	0Ω~400Ω , ±0.005Ω
T Accuracy	±0.05°C	Current measurement & accuracy	4~20mA , ±5μA
Reference feature	IEC-751	Voltage measurement & accuracy	0~10V , ±0.2mV
Sensor dimensions	Φ6×300mm Stainless Steel	Thermocouple measurement	Support model J, K

Dimensions(mm)



MTC25 • Accessories

Standard Accessories

Serial communication cable



LAN communication cable



USB communication cable



Power cable



Calibration Certificate



User's manual



Warranty card



Qualification



Maintenance manual



WEEE card



CD

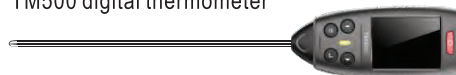


Optional Accessories

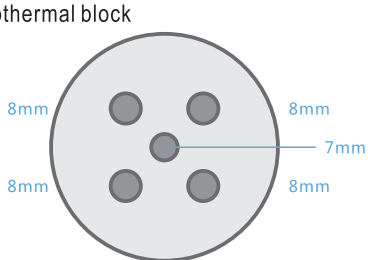
PT100-AA



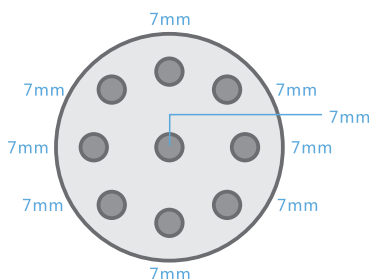
TM500 digital thermometer



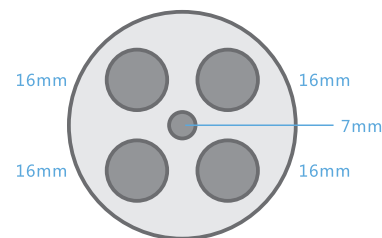
Isothermal block



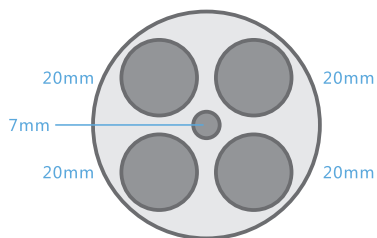
M01



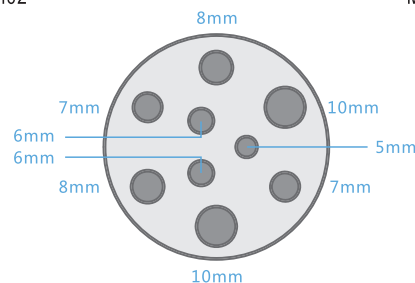
M02



M03



M04



M05

Ordering Information

Ordering model	Features
MTC25-PRO	Support electrical signal measurement with PT100-AA external sensor
MTC25-STD	Support electrical signal measurement
MTC25-LTD	No electrical signal measurement

International Free Call

+86-400-8878-571



Website



Weibo



WeChat



Youku



Facebook



Twitter



LinkedIn



Google+

ZOGLAB Microsystem Co.,Ltd

Tel: +86-571-87176990(16 lines) Fax: +86-571-87176992 E-mail: sales@zoglab.cn
Add: Floor 1-3, South Block, Building A, KUNLUN Science Park, No.61 BaijiaYuan Road,
West Lake District, Hangzhou, CHINA P.C:310023

ZOGLAB Microsystem Co.,Ltd ©2002-2017 ZOGLAB. All Rights Reserved. www.zoglab.cn



RECYCLABLE
Printed in China