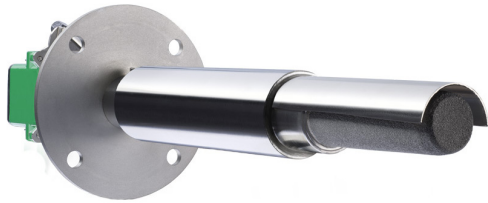




OXITEC[®] Economy - Electronic Unit

Housing:	Sheet steel ST37 powder coated RAL6029 (GRP optional)
IP code:	IP66
Display:	LC dot matrix 240 x 64 - LED backlit
Keypad:	membrane keypad
Signal LEDs:	alarm -orange, maintenance - orange, error -red
O₂ measuring range:	0,00 to 25,00 Vol.% O ₂
Accuracy:	± 0,2 % of measured value
Response time:	change of 100mV at sensor input < 200ms
Mains voltage:	230V ±10 % 50 to 60 Hz 115V ±10 % 50 to 60 Hz
Power consumption:	350 VA (heating phase) 200 VA (typical measuring mode)
Recommended fuse:	10A
Output signal O₂:	active, 0/4 to 20 mA max. load 500 Ω, galvanically isolated
Relay contact:	24 V AC/DC, 1 A
Dimensions:	300 x 440 x 240 mm (B x H x T)
Weight:	ca. 17 kg
Temperature range - storage*:	-40 °C to +80 °C
Temperature range - operation*:	-20 °C to +55 °C

* other temperature ranges on request



OXITEC[®] Economy - Probe

Process gas temperature:	max. 400 °C (752 °F) up to 1400 °C (2552 °F) with cooling protection tube
Immersion depth:	up to 500mm
Immersion depth with cooling tube:	500mm / 1000mm others on request
Measuring principle:	Zirconium oxide
Process gas pressure:	-50 to +50mbar (-0.725 to +0.725 PSIG)
Flow velocity:	0 to 50m/s
Ambient temperature:	-40 °C to +80 °C (-40 °F to +176 °F)
Reaction time:	0.5s (process flow velocity > 10m/sec.)
T90-time:	5.0s (process flow velocity > 10m/sec.)
Probe material:	V4A (DIN 1.4571 / SS316Ti)
IP code:	IP20
Detection limit:	< 1ppm O ₂
Power supply:	through electronic unit